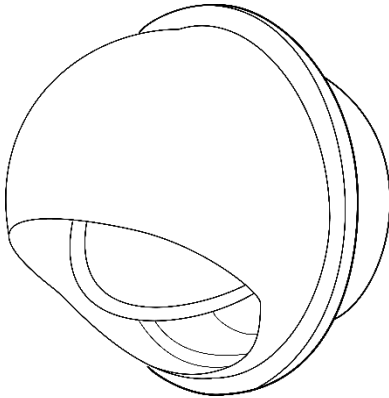




Commercial Submittal

1211 – Aluminum Dryer Vent

MODEL: 1211



Standard Features:

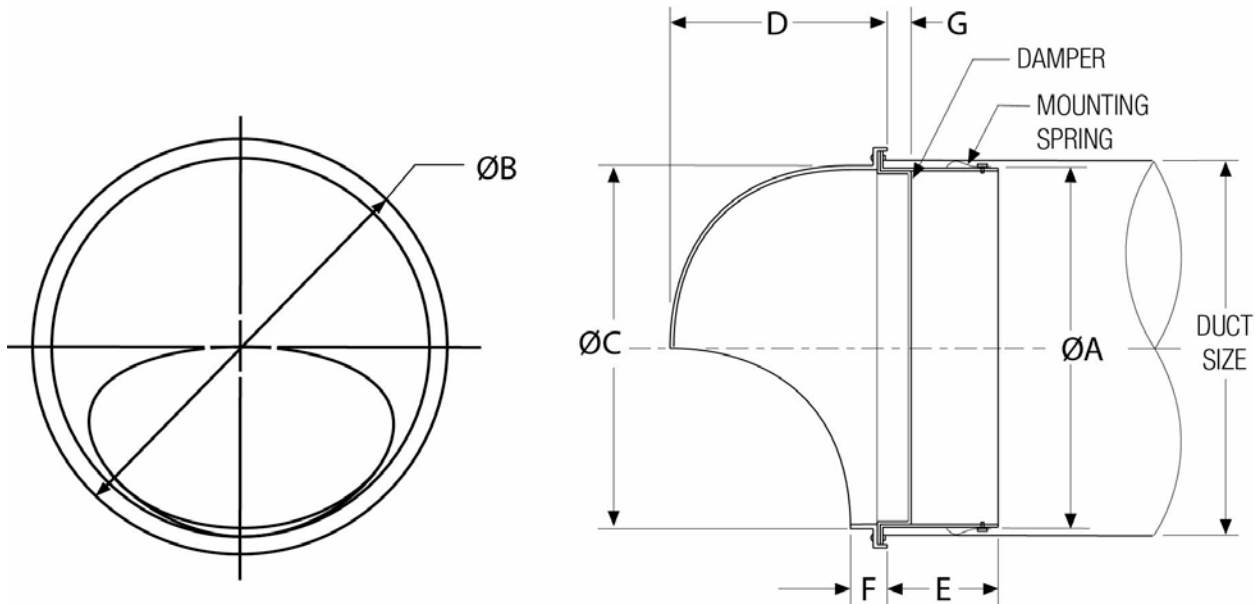
- Large free area reduces clogging
- Standard with back-draft flapper damper
- All Aluminum construction
- Anodized finish for corrosion protection
- 4" and 6" sizes available

Manufacturing Requirements:

Duct Size: 4" ☐ 6" ☐

Finish:

- ☐ Standard clear anodized
- Custom colors available (please call Customer Service for assistance)



Dimensions (in inches)

Duct Size	A	B	C	D	E	F	G	FREE AREA
4"	3 13/16	4 3/4	3 25/32	2 11/16	1 9/16	13/16	5/16	0.054 sq. ft.
6"	5 23/32	6 29/32	5 29/32	3 15/16	2 9/16	27/32	11/32	0.13 sq. ft.

Project / Location:

Engineer:

Architect:

Contractor:

Submittal Notes



Commercial Submittal

1211 – Aluminum Dryer Vent

MODEL: 1211

Project / Location:	Submittal Notes
Engineer:	
Architect:	
Contractor:	