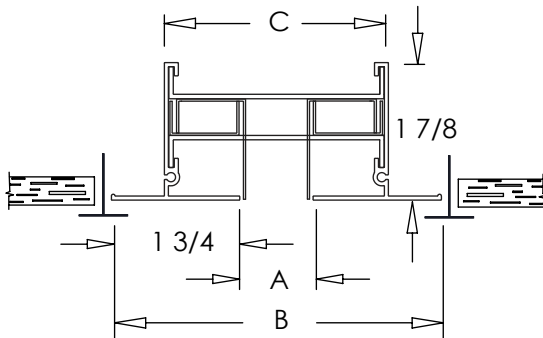
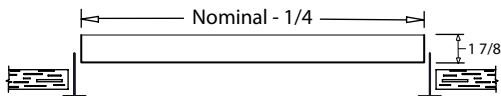
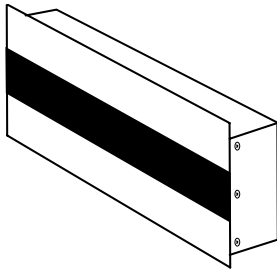


# Linear Jet Pair Diffuser Submittal

T-Bar – Wide Frame – Diffuser Only (Type 2)

MODEL: LJP-T2-DO



LJP-T2-DO  
T-BAR WIDE FRAME

## Standard Features:

- Jet pair diffuser designed for higher airflow capacity than conventional linear diffusers
- Jets airstream in a vertical direction in ceiling applications or horizontal direction in sidewall applications
- T-Bar mounting frame style with 1 3/4" frame and flat end caps
- Minimum length 12"
- Unlimited continuous

## Manufacturing Requirements:

Length \_\_\_\_\_ feet inches

Supply – Adjustable split 2-piece Jet Pair controllers for directional air volume control (LJP-T2-S)

Return – less controller (LJP-T2-R)

Number of slots: 1 2

Slot Width: 1" 1 1/2" 2" 2 1/2" 3"

## Options:

Flanged end caps  
90° Mitered corners

## Finishes:

### STANDARD COLORS

- ☐ Soft White
- ☐ Driftwood Tan
- ☐ Mill Finish

### DESIGNER COLORS

- ☐ Black
- ☐ Bronze
- ☐ Storm Gray
- ☐ Cement Gray

- ☐ Aluminum Paint
- ☐ Coffee Tan
- ☐ Warm White
- ☐ Glossy White

## Dimensions (in inches)

# OF SLOTS	SLOT WIDTH (A)	OVERALL WIDTH (B)	WIDTH OF BACK (C)
1	1	4 1/2	3 1/8
	1 1/2	5	3 5/8
	2	5 1/2	4 1/8
	2 1/2	6	4 5/8
	3	6 1/2	5 1/8
2	1	7 1/2	6 1/8
	1 1/2	8 1/2	7 1/8
	2	9 1/2	8 1/8
	2 1/2	10 1/2	9 1/8
	3	11 1/2	10 1/8

Note ID lengths 1/4" undersized nominal

## Additional Information:

## Submittal Notes

Project / Location:

Engineer:

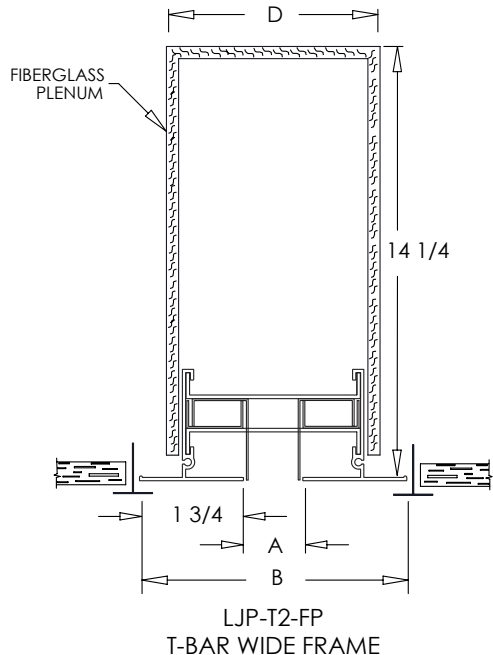
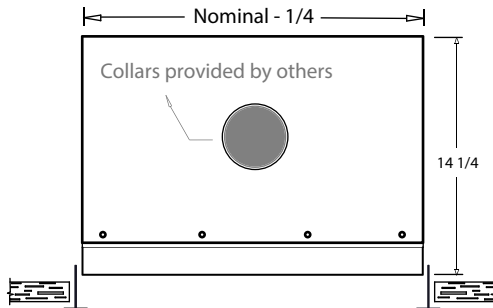
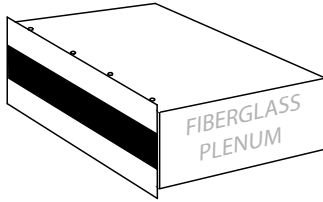
Architect:

Contractor:

# Linear Jet Pair Diffuser Submittal

## T-Bar – Wide Frame with Fiberglass Plenum (Type 2)

MODEL: LJP-T2-FP



### LINEAR JET PAIR DIFFUSER Standard Features:

- Jet Pair diffuser designed for higher airflow capacity than conventional linear diffusers
- Jets airstream in a vertical direction in ceiling applications or horizontal direction in sidewall applications
- T-Bar mounting frame style with 1 3/4" frame and flat end caps
- Rigid fiberglass plenum, allows for multiple locations of field installed spin in collar (collar provided by others)
- Fiberglass plenum ships installed on diffuser
- Minimum length 12"
- Unlimited continuous sections available with butt joints
- Soft White

### Manufacturing Requirements:

Length \_\_\_\_\_ feet \_\_\_\_\_ inches

Supply – Adjustable split 2-piece Jet Pair controllers for directional air volume control (LJP-T2-S)

Return – less controller (LJP-T2-R)

Number of slots: 1 2

Slot Width: 1" 1 1/2" 2" 2 1/2" 3"

### Options:

- Flanged end caps
- 90° Mitered corners

### Finishes:

#### STANDARD COLORS

- ☐ Soft White
- ☐ Driftwood Tan
- ☐ Mill Finish

#### DESIGNER COLORS

- ☐ Black
- ☐ Bronze
- ☐ Storm Gray
- ☐ Cement Gray

- ☐ Aluminum Paint
- ☐ Coffee Tan
- ☐ Warm White
- ☐ Glossy White

### Dimensions (in inches)

# OF SLOTS	SLOT WIDTH (A)	OVERALL WIDTH (B)	PLENUM WIDTH (D)
1	1	4 1/2	4 1/8
	1 1/2	5	4 5/8
	2	5 1/2	5 1/8
	2 1/2	6	5 5/8
	3	6 1/2	6 1/8
2	1	7 1/2	7 1/8
	1 1/2	8 1/2	8 1/8
	2	9 1/2	9 1/8
	2 1/2	10 1/2	10 1/8
	3	11 1/2	11 1/8

Note ID lengths 1/4" undersized nominal

### Additional Information:

### Submittal Notes

Project / Location:

Engineer:

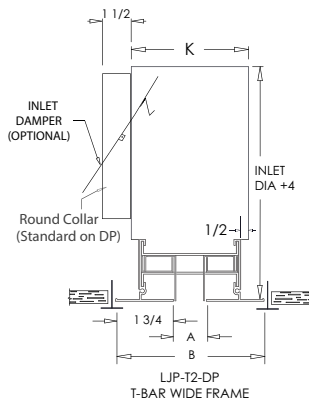
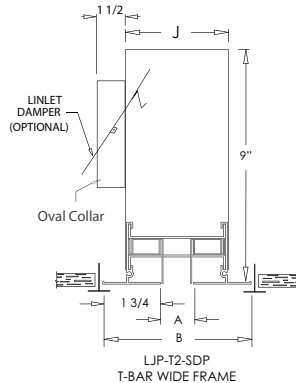
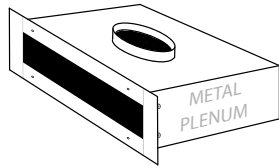
Architect:

Contractor:

# Linear Jet Pair Diffuser Submittal

T-Bar — Wide Frame with Metal Plenum (Type 2)

MODEL: LJP-T2-SDP, LJP-T2-DP



## LINEAR JET PAIR DIFFUSER Standard Features:

- Jet pair diffuser designed for higher airflow capacity than conventional linear diffusers
- Jet airstream in a vertical direction in ceiling applications or horizontal direction in sidewall applications
- T-Bar mounting frame style with 1 3/4" frame and flat end caps
- Minimum length 12"
- Unlimited continuous sections available with butt joints
- Soft White

## Manufacturing Requirements:

Length \_\_\_\_\_ feet \_\_\_\_\_ inches

Supply – Adjustable split 2-piece Jet Pair controllers for directional air volume control (LJP-T2-S)

Return – less controller (LJP-T2-R)

Number of slots: 1 2

Slot Width: 1" 1 1/2" 2" 2 1/2" 3"

## Options:

Flanged end caps  
90° Mitered corners

## Finishes:

☐ Soft White  
☐ Driftwood Tan

☐ Mill Finish  
Designer Color \_\_\_\_\_

## METAL PLENUM Standard Features:

- Metal Plenums ships separately from diffuser
- 24 gauge galvanized steel plenum
- Minimum length 12" and maximum single piece length is 6'
- Metal plenum ships separately from diffuser and requires field assembly

## Manufacturing Requirements:

Short Distribution Plenum – SDP (standard, height set at 9")

Distribution Plenum – DP (height = inlet diameter + 4")

Internal insulation: 1/2" fiberglass (std) – L 1/2" fiberglass w/foil back– LEX  
Closed cell – C

External insulation: 1/2" fiberglass w/foil back (std) – EX  
1" fiberglass – 1" – EX1

No insulation – N

Oval inlet sizes: 5" 6" 7" 8" 10" 12" 14" 16" (SDP and DP)

Round inlet sizes: 5" 6" 7" 8" 10" 12" 14" 16" (DP only)

No inlet (SDP and DP)

## Options:

Rod controlled damper

Twist controlled damper

Cord controlled damper

Perforated steel baffle\* – Type A - #69

Solid steel baffle\* – Type B - #70

\*Optional performance baffles improve comfort in short throw applications by widening the spread of the discharge air

## Dimensions (in inches)

# OF SLOTS	SLOT WIDTH (A)	OVERALL WIDTH (B)	SDP WIDTH (J)	DP WIDTH (K)
1	1	4 1/2	3 1/4	4 1/4
	1 1/2	5	3 3/4	4 3/4
	2	5 1/2	4 1/4	5 1/4
	2 1/2	6	4 3/4	5 3/4
	3	6 1/2	5 1/4	6 1/4
2	1	7 1/2	6 1/4	7 1/4
	1 1/2	8 1/2	7 1/4	8 1/4
	2	9 1/2	8 1/4	9 1/4
	2 1/2	10 1/2	9 1/4	10 1/4
	3	11 1/2	10 1/4	11 1/4

Note: Diffuser ID lengths 1/4" undersized nominal. Metal plenum manufactured to nominal dimensions. If duct opening is 48", plenum will be 48" and diffuser will be 47-3/4".

## Additional Information:

## Submittal Notes

Project / Location:

Engineer:

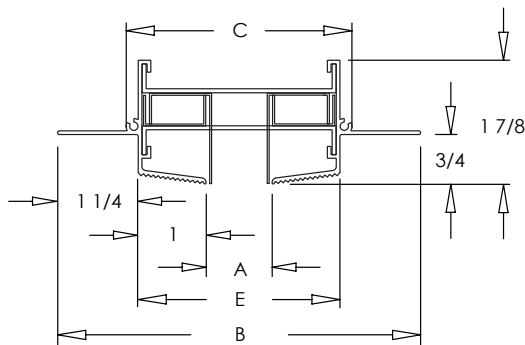
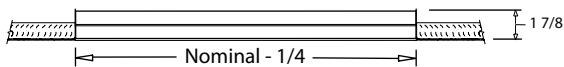
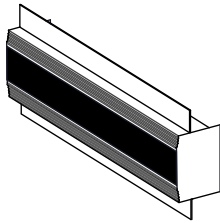
Architect:

Contractor:

# Linear Jet Pair Diffuser Submittal

Tape & Mud Frame – Diffuser only (Type 3)

MODEL: LJP-T3-DO



LJP-T3-DO  
TAPE AND MUD

## Standard Features:

- Jet pair diffuser designed for higher airflow capacity than conventional linear diffusers
- Jets airstream in a vertical direction in ceiling applications or horizontal direction in sidewall applications
- Tape & Mud flange for frameless and flush installation
- Minimum length 12"
- Unlimited continuous sections available with butt joints
- Soft White

## Manufacturing Requirements:

Length \_\_\_\_\_ feet inches

Supply – Adjustable split 2-piece Jet Pair controllers for directional air volume control (LJP-T3-S)

Return – less controller (LJP-T3-R)

Number of slots: 1 2

Slot Width: 1" 1 1/2" 2" 2 1/2" 3"

## Options:

90° Mitered corners

**Finishes: For LJP with 1 Slot, only Soft White and Mill Finish is an available finish.**

### STANDARD COLORS

- ☐ Soft White
- ☐ Driftwood Tan
- ☐ Mill Finish

### DESIGNER COLORS

- ☐ Black
- ☐ Bronze
- ☐ Storm Gray
- ☐ Cement Gray

- ☐ Aluminum Paint
- ☐ Coffee Tan
- ☐ Warm White
- ☐ Glossy White

Dimensions (in inches)				
# OF SLOTS	SLOT WIDTH (A)	OVERALL WIDTH (B)	WIDTH OF BACK (C)	OPENING WIDTH (E)
1	1	5 1/2	3 1/2	3 1/8
	1 1/2	6	4	3 5/8
	2	6 1/2	4 1/2	4 1/8
	2 1/2	7	5	4 5/8
	3	7 1/2	5 1/2	5 1/8
2	1	8 1/2	6 1/2	6 1/8
	1 1/2	9 1/2	7 1/2	7 1/8
	2	10 1/2	8 1/2	8 1/8
	2 1/2	11 1/2	9 1/2	9 1/8
	3	12 1/2	10 1/2	10 1/8

Note ID lengths 1/4" undersized nominal

## Additional Information:

## Submittal Notes

Project / Location:

Engineer:

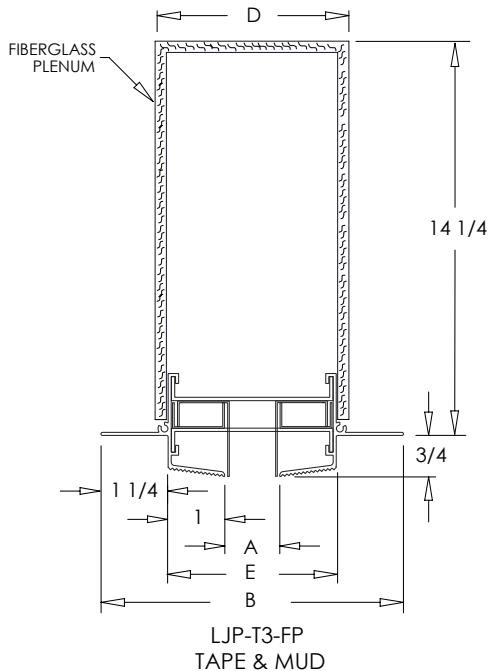
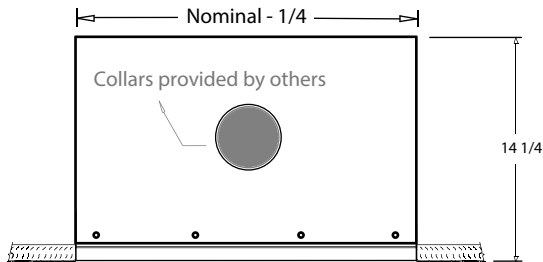
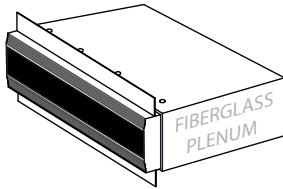
Architect:

Contractor:

# Linear Jet Pair Diffuser Submittal

## Tape & Mud Frame with Fiberglass Plenum (Type 3)

MODEL: LJP-T3-FP



### Standard Features:

- Jet pair diffuser designed for higher airflow capacity than conventional linear diffusers
- Jets airstream in a vertical direction in ceiling applications or horizontal direction in sidewall applications
- Tape & Mud flange for frameless and flush installation
- Rigid fiberglass plenum, allows for multiple locations of field installed spin in collar (collar provided by others)
- Fiberglass plenum ships installed on diffuser
- Minimum length 12"
- Unlimited continuous sections available with butt joints
- Soft White

### Manufacturing Requirements:

Length \_\_\_\_\_ feet inches

Supply – Adjustable split 2-piece Jet Pair controllers for directional air volume control (LJP-T3-S)

Return – less controller (LJP-T3-R)

Number of slots: 1 2

Slot Width: 1" 1 1/2" 2" 2 1/2" 3"

### Options:

90° Mitered corners

### Finishes: For LJP with 1 Slot, only Soft White or Mill Finish is an available finish.

#### STANDARD COLORS

- ☐ Soft White
- ☐ Driftwood Tan
- ☐ Mill Finish

#### DESIGNER COLORS

- ☐ Black
- ☐ Bronze
- ☐ Storm Gray
- ☐ Cement Gray
- ☐ Aluminum Paint
- ☐ Coffee Tan
- ☐ Warm White
- ☐ Glossy White

Dimensions (in inches)				
# OF SLOTS	SLOT WIDTH (A)	OVERALL WIDTH (B)	PLENUM WIDTH (D)	OPENING WIDTH (E)
1	1	5 1/2	4 1/8	3 1/8
	1 1/2	6	4 5/8	3 5/8
	2	6 1/2	5 1/8	4 1/8
	2 1/2	7	5 5/8	4 5/8
	3	7 1/2	6 1/8	5 1/8
2	1	8 1/2	7 1/8	6 1/8
	1 1/2	9 1/2	8 1/8	7 1/8
	2	10 1/2	9 1/8	8 1/8
	2 1/2	11 1/2	10 1/8	9 1/8
	3	12 1/2	11 1/8	10 1/8

Note ID lengths 1/4" undersized nominal

### Note:

The Type 3 Tape and Mud Flange is an effective and seamless mounting application for 1/2" or 5/8" drywall. Designed to create a frameless finished look. To install simply place diffuser in framed opening and screw through the flange to attach the product to the framed opening. Once secure, install sheetrock to cover flange and butt up to the frame's edges. Finish installing by taping and mudding the product and sheetrock to create the desired seamless finish.

### Additional Information:

### Submittal Notes

Project / Location:

Engineer:

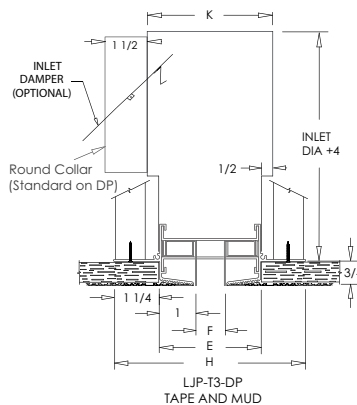
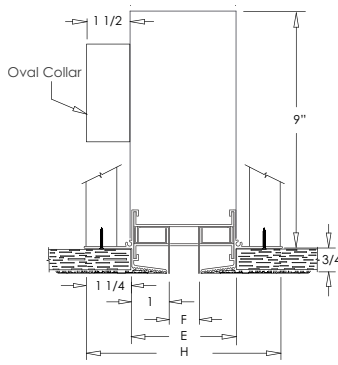
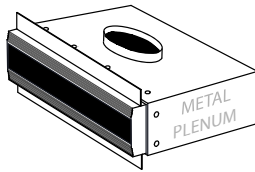
Architect:

Contractor:

# Linear Jet Pair Diffuser Submittal

## Tape & Mud Frame with Metal Plenum (Type 3)

MODEL: LJP-T3-SDP, LJP-T3-DP



### LINEAR JET PAIR DIFFUSER Standard Features:

- Jet pair diffuser designed for higher airflow capacity than conventional linear diffusers
- Jets airstream in a vertical direction in ceiling applications or horizontal direction in sidewall applications
- Tape & Mud flange for frameless and flush installation
- Minimum length 12"
- Unlimited continuous sections available with butt joints
- Soft White

### Manufacturing Requirements:

Length \_\_\_\_\_ feet \_\_\_\_\_ inches

Supply – Adjustable split 2-piece Jet Pair controllers for directional air volume control (LJP-T3-S)

Return – less controller (LJP-T3-R)

Number of slots: 1 2

Slot Width: 1" 1 1/2" 2" 2 1/2" 3"

### Options:

90° Mitered corners

**Finishes: For LJP with 1 Slot, only Soft White or Mill Finish is an available finish.**

☐ Soft White

☐ Driftwood Tan

☐ Mill Finish

Designer Color \_\_\_\_\_

### METAL PLENUM Standard Features:

- 24 gauge galvanized steel plenum
- Minimum length 12" and maximum single piece length is 6'
- Metal plenum ships separately from diffuser and requires field assembly

### Manufacturing Requirements:

Short Distribution Plenum – SDP (standard, height set at 9")

Distribution Plenum – DP (height = inlet diameter + 4")

Internal insulation: 1/2" fiberglass (std) – L 1/2" fiberglass w/foil back– LEX  
Closed cell – C

External insulation: 1/2" fiberglass w/foil back (std) – EX  
1" fiberglass – 1" – EX1

No insulation – N

Oval inlet sizes: 5" 6" 7" 8" 10" 12" 14" 16" (SDP and DP)

Round inlet sizes: 5" 6" 7" 8" 10" 12" 14" 16" (DP only)

No inlet (SDP and DP)

### Options:

Damper: Rod Twist Cord

Perforated steel baffle\* – Type A - #69

Solid steel baffle\* – Type B - #70

\*Optional performance baffles improve comfort in short throw applications by widening the spread of the discharge air

**Install Notes** Metal Plenum must be installed before the diffuser is installed. The Type 3 Tape and Mud Flange is an effective and seamless mounting application for 1/2" or 5/8" drywall. Designed to create a frameless finished look. To install simply place diffuser in framed opening and screw through the flange to attach the product to the framed opening. Once secure, install sheetrock to cover flange and butt up to the frame's edges. Finish installing by taping and mudding the product and sheetrock to create the desired seamless finish.

Dimensions (in inches)					
# OF SLOTS	SLOT WIDTH (F)	OVERALL WIDTH (H)	SDP WIDTH (J)	DP WIDTH (K)	OPENING WIDTH (E)
1	1	5 1/2	3 3/4	4 3/4	3 1/8
	1 1/2	6	4 1/4	5 1/4	3 5/8
	2	6 1/2	4 3/4	5 3/4	4 1/8
	2 1/2	7	5 1/4	6 1/4	4 5/8
2	3	7 1/2	5 3/4	6 3/4	5 1/8
	1	8 1/2	6 3/4	7 3/4	6 1/8
	1 1/2	9 1/2	7 3/4	8 3/4	7 1/8
	2	10 1/2	8 3/4	9 3/4	8 1/8
	2 1/2	11 1/2	9 3/4	10 3/4	9 1/8
	3	12 1/2	10 3/4	11 3/4	10 1/8

Note: Diffuser ID lengths 1/4" undersized nominal. Metal plenum manufactured to nominal dimensions. If duct opening is 48", plenum will be 48" and diffuser will be 47-3/4".

### Additional Information:

### Submittal Notes

Project / Location:

Engineer:

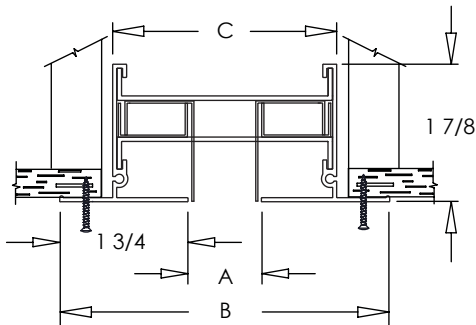
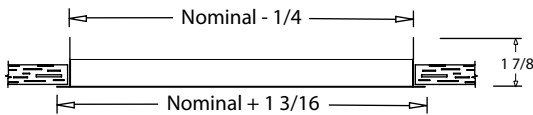
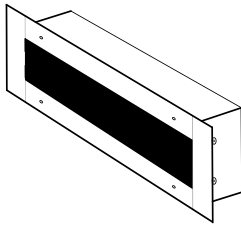
Architect:

Contractor:

# Linear Jet Pair Diffuser Submittal

## Surface Mount Frame – Diffuser Only (Type 4)

MODEL: LJP-T4-DO



LJP-T4-DO  
SURFACE MOUNT

### Standard Features:

- Jet pair diffuser designed for higher airflow capacity than conventional linear diffusers
- Jets airstream in a vertical direction in ceiling applications or horizontal direction in sidewall applications
- Surface mount frame style with 1 3/4" flange. Countersunk mounting holes for flush appearance with flanged end caps and color matching Phillips Pozidriv screws
- Minimum length 12"
- Unlimited continuous sections available with butt joints
- Soft White

### Manufacturing Requirements:

Length \_\_\_\_\_ feet \_\_\_\_\_ inches

Supply – Adjustable split 2-piece Jet Pair controllers for directional air volume control (LJP-T4-S)

Return – less controller (LJP-T4-R)

Number of slots: 1 2

Slot Width: 1" 1 1/2" 2" 2 1/2" 3"

### Options:

- Flat end caps
- 90° Mitered corners

### Finishes:

#### STANDARD COLORS

- ☐ Soft White
- ☐ Driftwood Tan
- ☐ Mill Finish

#### DESIGNER COLORS

- ☐ Black
- ☐ Bronze
- ☐ Storm Gray
- ☐ Cement Gray

- ☐ Aluminum Paint
- ☐ Coffee Tan
- ☐ Warm White
- ☐ Glossy White

### Dimensions (in inches)

# OF SLOTS	SLOT WIDTH (A)	OVERALL WIDTH (B)	WIDTH OF BACK (C)
1	1	4 1/2	3 1/8
	1 1/2	5	3 5/8
	2	5 1/2	4 1/8
	2 1/2	6	4 5/8
	3	6 1/2	5 1/8
2	1	7 1/2	6 1/8
	1 1/2	8 1/2	7 1/8
	2	9 1/2	8 1/8
	2 1/2	10 1/2	9 1/8
	3	11 1/2	10 1/8

Note ID lengths 1/4" undersized nominal

### Additional Information:

### Submittal Notes

Project / Location:

Engineer:

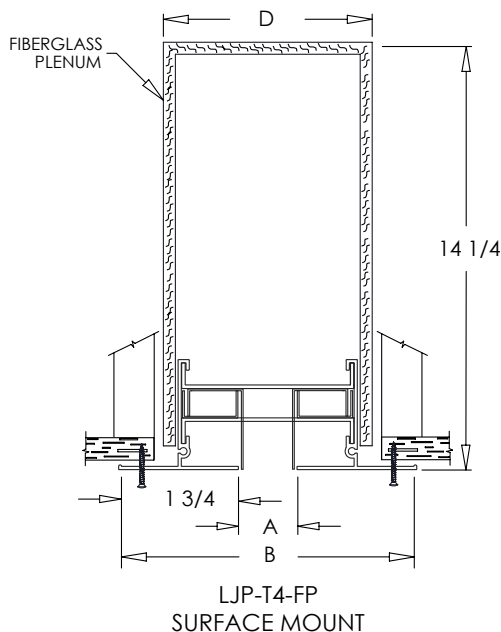
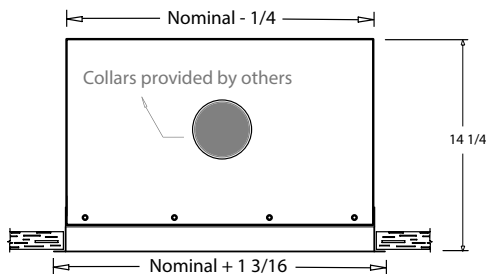
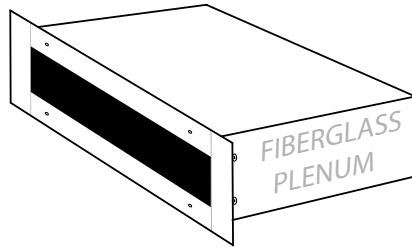
Architect:

Contractor:

# Linear Jet Pair Diffuser Submittal

## Surface Mount Frame with Fiberglass Plenum (Type 4)

MODEL: LJP-T4-FP



### Standard Features:

- Jet pair diffuser designed for higher airflow capacity than conventional linear diffusers
- Jets airstream in a vertical direction in ceiling applications or horizontal direction in sidewall applications
- Surface mount frame style with 1 3/4" flange. Countersunk mounting holes for flush appearance with flanged end caps and color matching Phillips Pozidriv screws
- Rigid fiberglass plenum, allows for multiple locations of field installed spin in collar (collar provided by others)
- Fiberglass plenum ships installed on diffuser
- Minimum length 12"
- Unlimited continuous sections available with butt joints
- Soft White

### Manufacturing Requirements:

Length \_\_\_\_\_ feet \_\_\_\_\_ inches

Supply – Adjustable split 2-piece Jet Pair controllers for directional air volume control (LJP-T4-S)

Return – less controller (LJP-T4-R)

Number of slots: 1 2

Slot Width: 1" 1 1/2" 2" 2 1/2" 3"

### Options:

Flat end caps

90° Mitered corners

### Finishes:

#### STANDARD COLORS

- ☐ Soft White
- ☐ Driftwood Tan
- ☐ Mill Finish

#### DESIGNER COLORS

- ☐ Black
- ☐ Bronze
- ☐ Storm Gray
- ☐ Cement Gray
- ☐ Aluminum Paint
- ☐ Coffee Tan
- ☐ Warm White
- ☐ Glossy White

### Dimensions (in inches)

# OF SLOTS	SLOT WIDTH (A)	OVERALL WIDTH (B)	WIDTH OF BACK (D)
1	1	4 1/2	4 1/8
	1 1/2	5	4 5/8
	2	5 1/2	5 1/8
	2 1/2	6	5 5/8
	3	6 1/2	6 1/8
2	1	7 1/2	7 1/8
	1 1/2	8 1/2	8 1/8
	2	9 1/2	9 1/8
	2 1/2	10 1/2	10 1/8
	3	11 1/2	11 1/8

Note ID lengths 1/4" undersized nominal

### Additional Information:

### Submittal Notes

Project / Location:

Engineer:

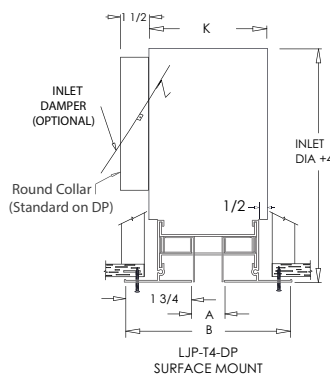
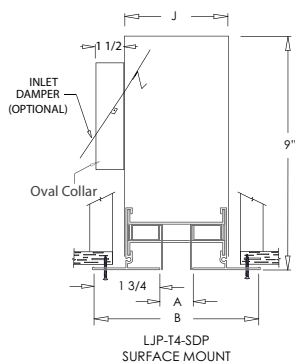
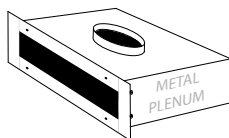
Architect:

Contractor:

# Linear Jet Pair Diffuser Submittal

## Surface Mount Frame with Metal Plenum (Type 4)

MODEL: LJP-T4-SDP, LJP-T4-DP



**Dimensions (in inches)**

# OF SLOTS	SLOT WIDTH (A)	OVERALL WIDTH (B)	SDP WIDTH (J)	DP WIDTH (K)
1	1	4 1/2	3 1/4	4 1/4
	1 1/2	5	3 3/4	4 3/4
	2	5 1/2	4 1/4	5 1/4
	2 1/2	6	4 3/4	5 3/4
	3	6 1/2	5 1/4	6 1/4
2	1	7 1/2	6 1/4	7 1/4
	1 1/2	8 1/2	7 1/4	8 1/4
	2	9 1/2	8 1/4	9 1/4
	2 1/2	10 1/2	9 1/4	10 1/4
	3	11 1/2	10 1/4	11 1/4

**Note:** Diffuser ID lengths 1/4" undersized nominal. Metal plenum manufactured to nominal dimensions. If duct opening is 48", plenum will be 48" and diffuser will be 47-3/4".

### LINEAR JET BAR DIFFUSER Standard Features:

- Jet pair diffuser designed for higher airflow capacity than conventional linear diffusers
- Jets airstream in a vertical direction in ceiling applications or horizontal direction in sidewall applications
- Surface mount frame style with 1 3/4" flange. Countersunk mounting holes for flush appearance with end flanges and color matching Philips Pozidriv screws
- Minimum length 12"
- Unlimited continuous sections available with butt joints
- Soft White

### Manufacturing Requirements:

Length \_\_\_\_\_ feet inches

Supply – Adjustable split 2-piece Jet Pair controllers for directional air volume control (LJP-T4-S)

Return – less controller (LJP-T4-R)

Number of slots: 1 2

Slot Width: 1" 1 1/2" 2" 2 1/2" 3"

### Options:

Flat end caps  
90° Mitered corners

### Finishes:

☐ Soft White  
☐ Driftwood Tan

☐ Mill Finish  
Designer Color \_\_\_\_\_

### METAL PLENUM Standard Features:

- 24 gauge galvanized steel plenum
- Minimum length 12" and maximum single piece length is 6'
- Metal plenum ships separately from diffuser and requires field assembly

### Manufacturing Requirements:

Short Distribution Plenum – SDP (standard, height set at 9")

Distribution Plenum – DP (height = inlet diameter + 4")

Internal insulation: 1/2" fiberglass (std) – L 1/2" fiberglass w/foil back – LEX  
Closed cell – C

External insulation: 1/2" fiberglass w/foil back (std) – EX  
1" fiberglass – 1" – EX1

No insulation – N

Oval inlet sizes: 5" 6" 7" 8" 10" 12" 14" 16" (SDP and DP)

Round inlet sizes: 5" 6" 7" 8" 10" 12" 14" 16" (DP only)

No inlet (SDP and DP)

### Options:

Rod controlled damper  
Twist controlled damper  
Cord controlled damper  
Perforated steel baffle\* – Type A - #69  
Solid steel baffle\* – Type B - #70

\*Optional performance baffles improve comfort in short throw applications by widening the spread of the discharge air

### Additional Information:

### Submittal Notes

Project / Location:

Engineer:

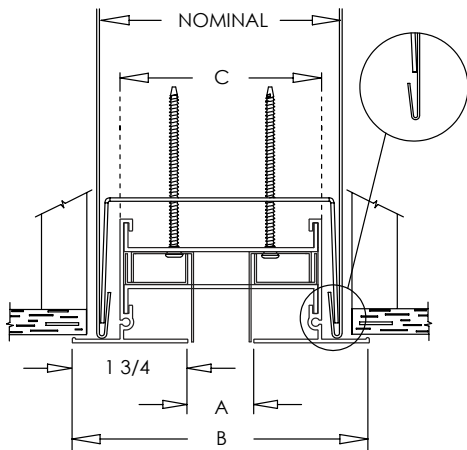
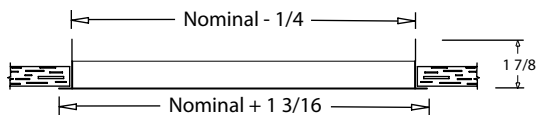
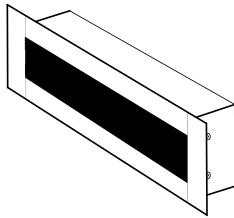
Architect:

Contractor:

# Linear Jet Pair Diffuser Submittal

## Duct Bracket Mount Frame – Diffuser Only (Type 6)

MODEL: LJP-T6-DO



LJP-T6-DO  
DUCT BRACKET MOUNT

### Standard Features:

- Jet pair diffuser designed for higher airflow capacity than conventional linear diffusers
- Jets airstream in a vertical direction in ceiling applications or horizontal direction for sidewall applications
- Duct Bracket mount frame style with 1 3/4" flange and flanged end caps
- Multiple fastening locations for each diffuser
- Minimum length 12"
- Unlimited continuous sections available with butt joints
- Soft White

### Manufacturing Requirements:

Length \_\_\_\_\_ feet inches

Supply – Adjustable split 2-piece Jet Pair controllers for directional air volume control (LJP-T6-S)

Return – less controller (LJP-T6-R)

Number of slots: 1 2

Slot Width: 1" 1 1/2" 2" 2 1/2" 3"

### Options:

Flat end caps

90° Mitered corners

### Finishes:

#### STANDARD COLORS

- ☐ Soft White
- ☐ Driftwood Tan
- ☐ Mill Finish

#### DESIGNER COLORS

- ☐ Black
- ☐ Bronze
- ☐ Storm Gray
- ☐ Cement Gray
- ☐ Aluminum Paint
- ☐ Coffee Tan
- ☐ Warm White
- ☐ Glossy White

#### Dimensions (in inches)

# OF SLOTS	SLOT WIDTH (A)	OVERALL WIDTH (B)	WIDTH OF BACK (C)
1	1	4 1/2	3 1/8
	1 1/2	5	3 5/8
	2	5 1/2	4 1/8
	2 1/2	6	4 5/8
	3	6 1/2	5 1/8
2	1	7 1/2	6 1/8
	1 1/2	8 1/2	7 1/8
	2	9 1/2	8 1/8
	2 1/2	10 1/2	9 1/8
	3	11 1/2	10 1/8

Note: ID lengths 1/4" undersized nominal

### Install Notes:

Plenum must be installed before diffuser install. The Type 6 Duct Mount is an effective and quick mounting mechanism. Attach the duct bracket to the LJP-T6 only tapping the fastening screws enough to hold the LJP-T6 and bracket together. Once the brackets have been attached to the LJP-T6 and the unit is set into place, the duct brackets will snap into position. The rolled edges of the duct support the duct bracket, holding it in place, while the fastening screws are threaded in the remainder of the way to pull the LJP-T6 tight to the finished surface. Duct brackets and mounting screws will ship with the LJP-T6.

### Additional Information:

### Submittal Notes

Project / Location:

Engineer:

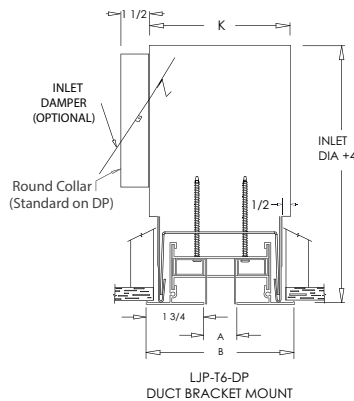
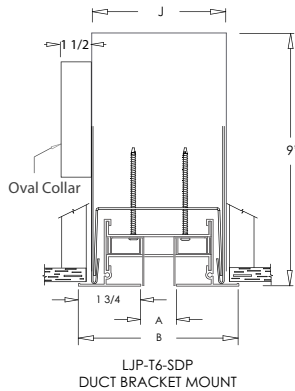
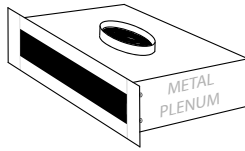
Architect:

Contractor:

# Linear Jet Bar Diffuser Submittal

## Duct Bracket Mount Frame with Metal Plenum (Type 6)

MODEL: LJP-T6-SDP, LJP-T6-DP



**Dimensions (in inches)**

# OF SLOTS	SLOT WIDTH (A)	OVERALL WIDTH (B)	SDP WIDTH (J)	DP WIDTH (K)
1	1	4 1/2	3 3/4	4 3/4
	1 1/2	5	4 1/4	5 1/4
	2	5 1/2	4 3/4	5 3/4
	2 1/2	6	5 1/4	6 1/4
	3	6 1/2	5 3/4	6 3/4
2	1	7 1/2	6 3/4	7 3/4
	1 1/2	8 1/2	7 3/4	8 3/4
	2	9 1/2	8 3/4	9 3/4
	2 1/2	10 1/2	9 3/4	10 3/4
	3	11 1/2	10 3/4	11 3/4

Note: Diffuser ID lengths 1/4" undersized nominal. Metal plenum manufactured to nominal dimensions. If duct opening is 48", plenum will be 48" and diffuser will be 47-3/4".

### LINEAR JET PAIR DIFFUSER Standard Features:

- Jet pair diffuser designed for higher airflow capacity than conventional linear diffusers
- Jets airstream in a vertical direction for ceiling applications or horizontal direction in sidewall applications
- Duct Bracket mount frame style with 1 3/4" flange and flanged end caps
- Multiple fastening locations for each diffuser
- Minimum length 12"
- Unlimited continuous sections available with butt joints
- Soft White

### Manufacturing Requirements:

Length \_\_\_\_\_ feet \_\_\_\_\_ inches

Supply – Adjustable split 2-piece Jet Pair controllers for directional air volume control (LJP-T6-S)

Return – less controller (LJP-T6-R)

Number of slots: 1 2

Slot Width: 1" 1 1/2" 2" 2 1/2" 3"

### Options:

Flat end caps

90° Mitered corners

### Finishes:

☐ Soft White

☐ Driftwood Tan

☐ Mill Finish

Designer Color \_\_\_\_\_

### METAL PLENUM Standard Features:

- 24 gauge galvanized steel plenum, with hemmed rail
- Minimum length 12" and maximum single piece length is 6'
- Metal plenum ships separately from diffuser and requires field assembly

### Manufacturing Requirements:

Short Distribution Plenum – SDP (standard, height set at 9")

Distribution Plenum – DP (height = inlet diameter + 4")

Internal insulation: 1/2" fiberglass (std) – L 1/2" fiberglass w/foil back– LEX  
Closed cell – C

External insulation: 1/2" fiberglass w/foil back (std) – EX  
1" fiberglass – 1" – EX1

No insulation – N

Oval inlet sizes: 5" 6" 7" 8" 10" 12" 14" 16" (SDP and DP)

Round inlet sizes: 5" 6" 7" 8" 10" 12" 14" 16" (DP only)

No inlet (SDP and DP)

### Options:

Damper: Rod Twist Cord

Perforated steel baffle\* – Type A - #69

Solid steel baffle\* – Type B - #70

\*Optional performance baffles improve comfort in short throw applications by widening the spread of the discharge air

**Install Notes** Metal Plenum must be installed before the diffuser is installed. The Type 6 Duct Mount is an effective and quick mounting mechanism. Attach the duct bracket to the LJP-T6 only tapping the fastening screws enough to hold the LJP-T6 and bracket together. Once the brackets have been attached to the LJP-T6 and the unit is set into place, the duct brackets will snap into position. The rolled edges of the duct support the duct bracket, holding it in place, while the fastening screws are threaded in the remainder of the way to pull the LJP-T6 tight to the finished surface. Duct brackets and mounting screws will ship with the LJP-T6.

### Additional Information:

### Submittal Notes

Project / Location:

Engineer:

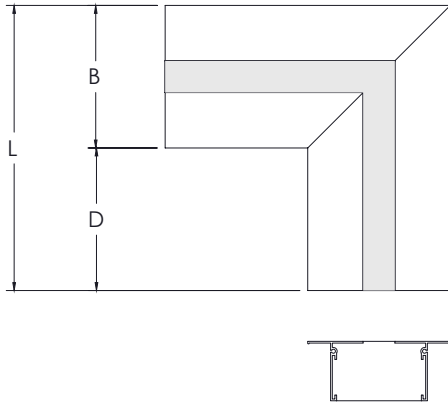
Architect:

Contractor:

# Commercial Submittal

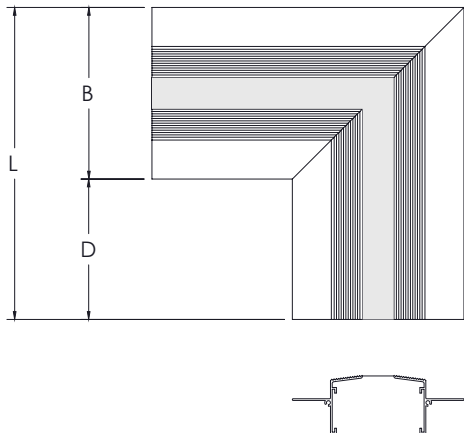
## Mitered Corner Linear Jet Bar (1 Slot Configuration)

LJP Mitered Corner  
1 Slot Types 2, 4



Dimensions (in inches)			
Type 2, 4			
SLOT WIDTH	(L)	(B)	(D)
1	9	4 1/2	4 1/2
1 1/2	9	5	4
2	9	5 1/2	3 1/2
2 1/2	9	6	3
3	9	6 1/2	2 1/2

LJP Mitered Corner  
1 Slot Type 3



Dimensions (in inches)			
Type 3			
SLOT WIDTH	(L)	(B)	(D)
1	10	5 1/2	4 1/2
1 1/2	10	6	4
2	10	6 1/2	3 1/2
2 1/2	10	7	3
3	10	7 1/2	2 1/2

### Additional Information:

### Submittal Notes

Project / Location:

Engineer:

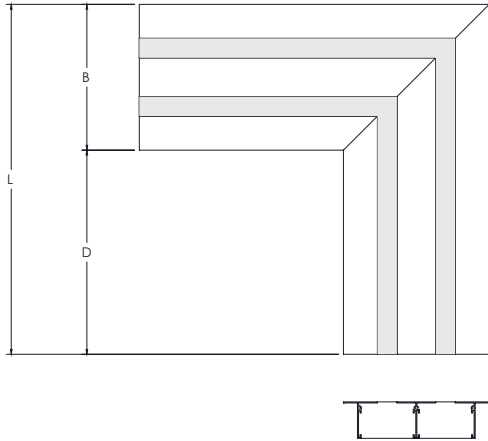
Architect:

Contractor:

# Commercial Submittal

## Mitered Corner Linear Jet Bar (2 Slot Configuration)

LJP Mitered Corner  
2 Slot Types 2, 4,

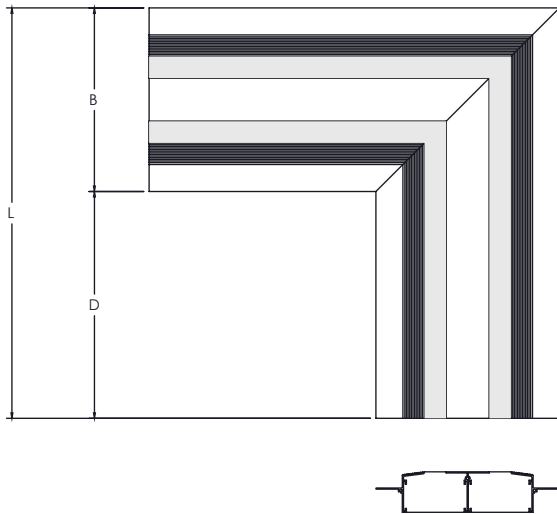


**Dimensions (in inches)**

**Type 2, 4**

SLOT WIDTH	(L)	(B)	(D)
1	18	7 1/2	10 1/2
1 1/2	18	8 1/2	9 1/2
2	18	9 1/2	8 1/2
2 1/2	18	10 1/2	7 1/2
3	18	11 1/2	6 1/2

LJP Mitered Corner  
2 Slot Type 3



**Dimensions (in inches)**

**Type 3**

SLOT WIDTH	(L)	(B)	(D)
1	19	8 1/2	10 1/2
1 1/2	19	9 1/2	9 1/2
2	19	10 1/2	8 1/2
2 1/2	19	11 1/2	7 1/2
3	19	12 1/2	6 1/2

### Additional Information:

### Submittal Notes

Project / Location:

Engineer:

Architect:

Contractor: