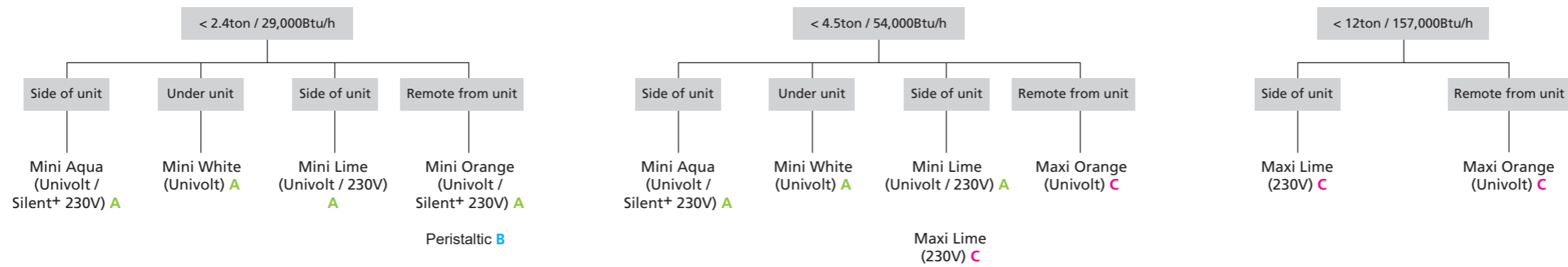




US Pump Selector Decision Tree

Ductless Mini Split



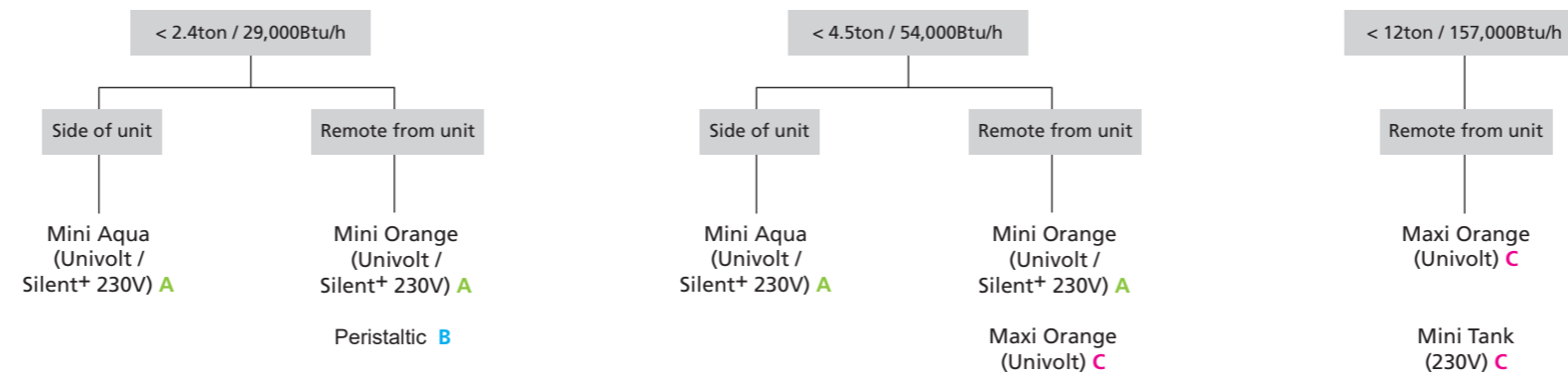
Pump Results key: Below each 'pump result' picture it will be captioned with one of the following sentences. This shows focus, whilst offering and aiding choice.

- A (mini pumps) = ✓ Perfect for... limited installation space and when quiet operation is needed
- B (persiltatic) = ✓ Perfect for... Remote from unit installations up to 3m and when undistruptive servicing access is needed
- C (maxi / mini tank) = ✓ Perfect for... larger capacity units – 10-46kW



US Pump Selector Decision Tree

Floor Standing



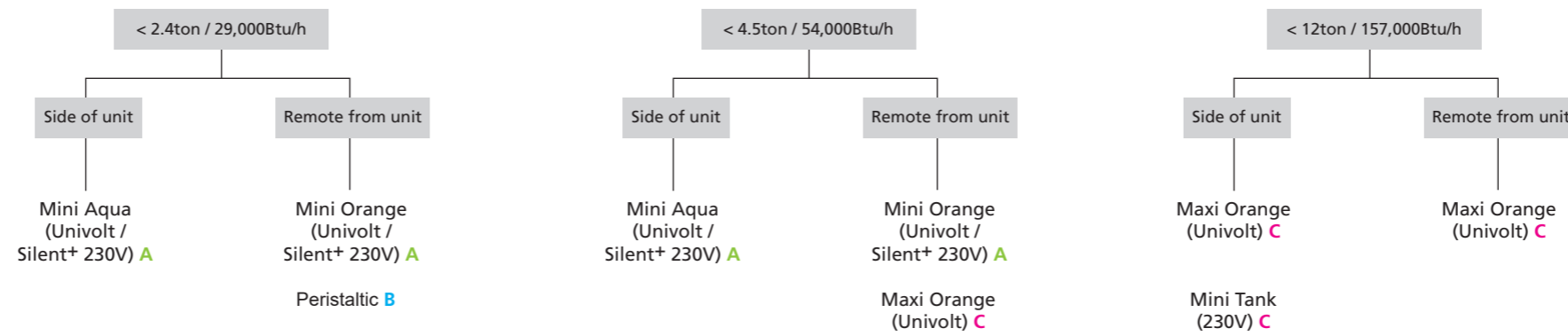
Pump Results key: Below each 'pump result' picture it will be captioned with one of the following sentences. This shows focus, whilst offering and aiding choice.

- A (mini pumps) = ✓ Perfect for... limited installation space and when quiet operation is needed
- B (persiltatic) = ✓ Perfect for... Remote from unit installations up to 3m and when undisruptive servicing access is needed
- C (maxi / mini tank) = ✓ Perfect for... larger capacity units – 10-46kW



US Pump Selector Decision Tree

Ceiling Suspended Unit



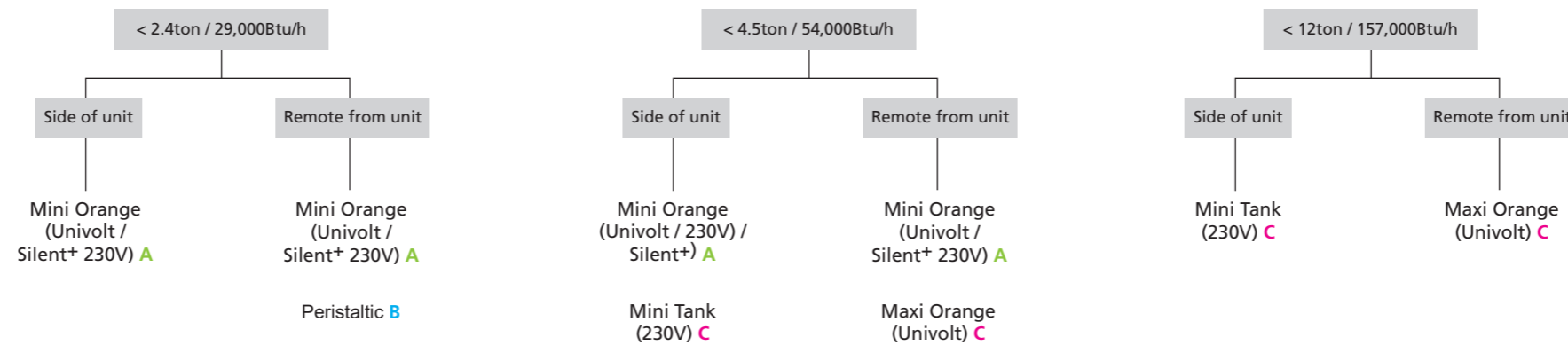
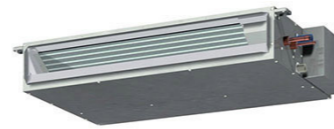
Pump Results key: Below each 'pump result' picture it will be captioned with one of the following sentences. This shows focus, whilst offering and aiding choice.

- A (mini pumps) = ✓ Perfect for... limited installation space and when quiet operation is needed
- B (persiltatic) = ✓ Perfect for... Remote from unit installations up to 3m and when undisruptive servicing access is needed
- C (maxi / mini tank) = ✓ Perfect for... larger capacity units – 10-46kW



US Pump Selector Decision Tree

Ducted Unit



Pump Results key: Below each 'pump result' picture it will be captioned with one of the following sentences. This shows focus, whilst offering and aiding choice.

- A (mini pumps) = ✓ Perfect for... limited installation space and when quiet operation is needed
- B (persiltatic) = ✓ Perfect for... Remote from unit installations up to 3m and when undisruptive servicing access is needed
- C (maxi / mini tank) = ✓ Perfect for... larger capacity units – 10-46kW